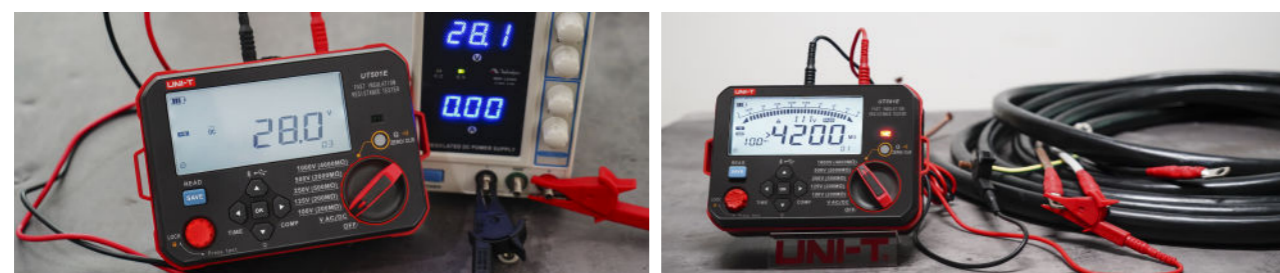


## Technical Specifications

Specification			
Insulation resistance (0~4GΩ)	100V	0.10~20.0M	±(2%+6)
		20.1~200M	±(5%+6)
	125V	0.10~20.0M	±(2%+6)
		20.1~200M	±(5%+6)
	250V	0.20~40.0M	±(2%+6)
		40.1~500M	±(5%+6)
500V	0.5~200M	±(2%+6)	
	201~2000M	±(5%+6)	
1000V	1.00~1000M	±(2%+6)	
	1001~4000M	±(5%+6)	
Rated current	1.0mA		
Short circuit current	<2.0mA		
Low resistance measurement	0.00Ω~400Ω ±(2%+8)		
AC voltage	30V~600V ±(2%+3); 50Hz/60Hz		
DC voltage	30V~600V ±(2%+3)		
Features			
Fast measurement	√ (2.5 times faster insulation measurement)		
DAR	√		
PI	√		
Compare function	√		
Auto discharge	√		
High voltage alarm	√		
Manual range (insulation)	√		
Auto range (voltage)	√		
Data storage	99 set		
Overrange display	OL		
Security lock	√		
Remote testing	√		
Analog strip	√		
IP rating	IP54		
CAT rating	CAT III 600V		
Other features	Backlight, Auto power off, Low battery indication		
Characteristics			
Power supply	11.1V/2600mAh lithium battery		
Product color	Black + Red		
Product dimension	161 x 116 x 68mm		



**UNI-TREND  
TECHNOLOGY**



[meters.uni-trend.com](https://meters.uni-trend.com)



**UNI-T®**



## UT501E Fast Insulation Tester

UT501E can verify the quality of the electrical equipment produced, confirm the change of the insulation of the electrical equipment over time, troubleshoot and determine the cause of the fault.

It features 2.5 times fast measurement, comparison test function and alarm function, and the "safety lock function" prevent false and effectively improve the work efficiency of electrical engineers. It is a convenient and practical tool.

**2.5X**

2.5 times fast  
measurement

**2600mAh**

Lithium  
battery  
(2600mAh)

**IP54**

IP54  
protection



Auto  
discharge



Low impedance  
measurement



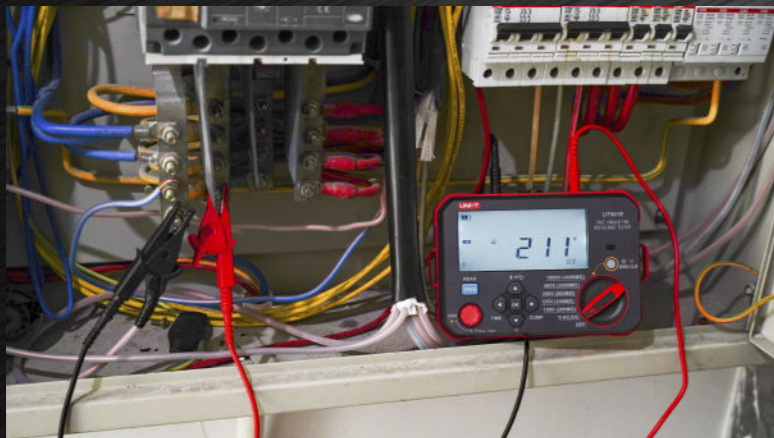
High  
voltage  
alarm

### Lightning-Fast Insulation Resistance Measurement



You can now measure insulation resistance a whopping 2.5 times faster than traditional devices.

### Automatic Voltage Measurement



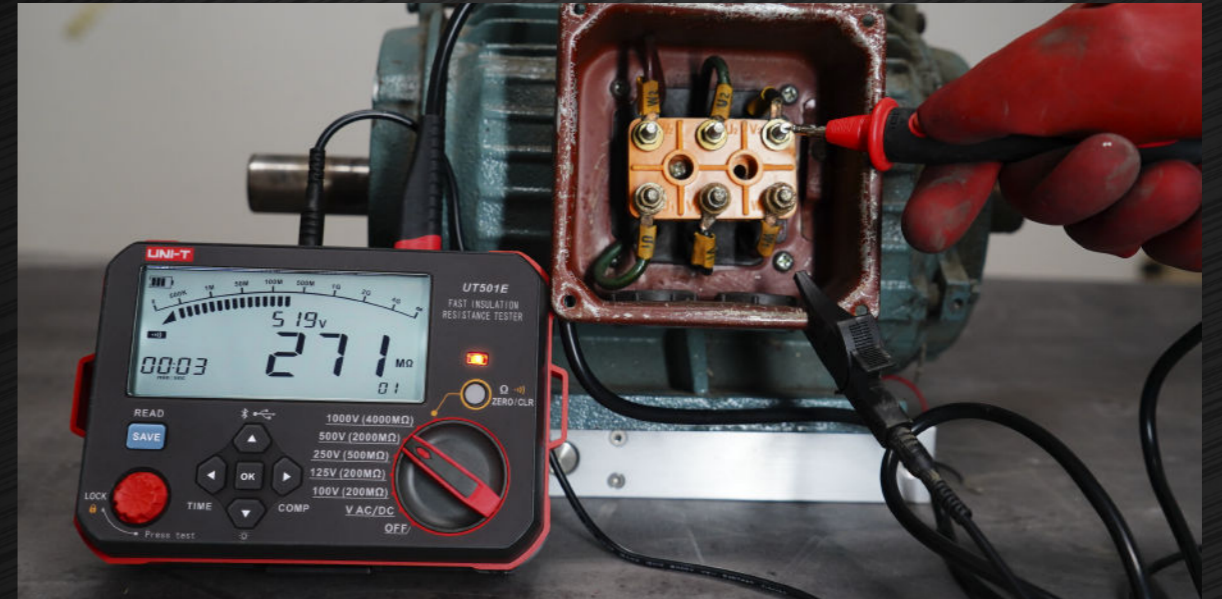
The tester automatically measures the AC/DC voltage, ensuring accurate results every time.

### Auto Discharge for Safety

It automatically discharges the capacitive voltage of the tested circuit after completing the measurements, minimizing the risk of accidental shocks and protecting both you and your equipment.

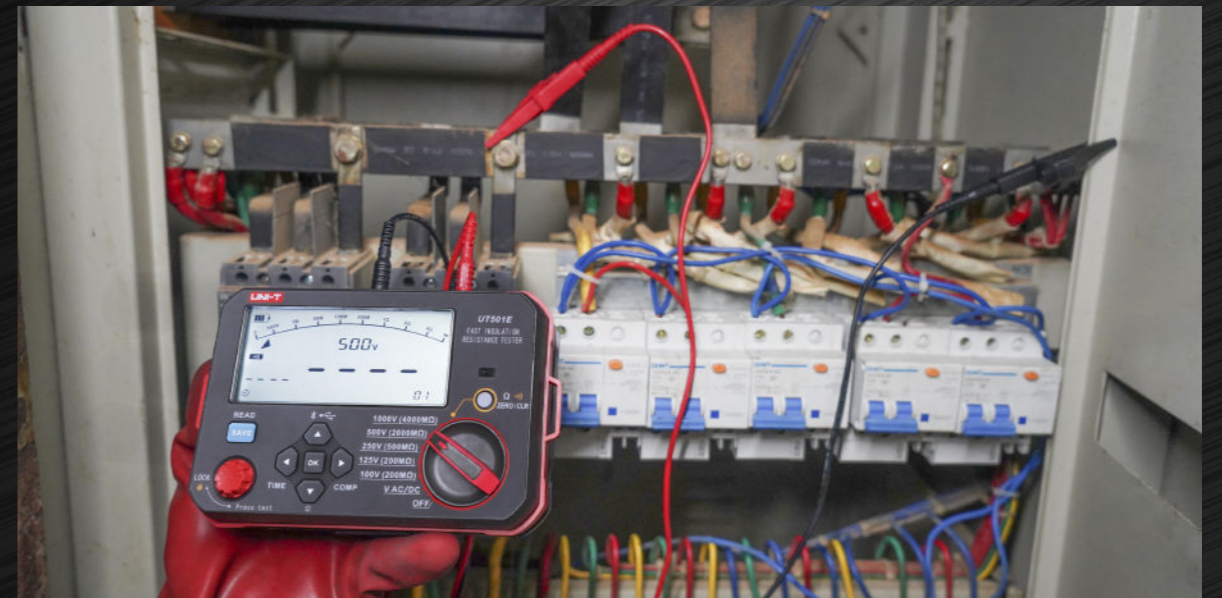


### Remote control test lead



It can perform tests and measurements from a distance, providing you with the freedom to navigate complex testing environments or hard-to-reach areas effortlessly.

### Portable & Convenient



Its compact size allows you to take it anywhere, whether it's to different job sites or simply to move around within your workspace.